



# Annual Report

## 2013



The inaugural Dalyellup Primary School Board was established in 2013 following our successful application to become an Independent Public School. 2013 saw the transition of the former School Council to a School Board following a school community wide election. The board consists of both parent and staff representatives.

I am proud to have been elected as the first Chairperson of the board and have received expert guidance and support from our Principal Mr Gary Quinn as well as from the professional learning opportunities given to the board members in 2013.

The fundamental purpose of the board is to make decisions that are in the best interests of all students and enhance the quality of education provided by the school.

The Board has achieved a number of objectives in 2013:

- Developed “Terms of Reference” for the School board in order to have the Performance Agreement accepted by the Director General of the Department of Education.
- Liaised with the school administration to endorse the School Business Plan 2013 – 2015. The plan provides direction for Dalyellup Primary School and has been made available to the wider community through the school website.
- Reviewed and endorsed the 2013 school budget prepared by the School Executive.
- Endorsed the contributions and charges for the following year.
- Endorsed the key performance targets and strategies for English and Math.
- Supported the introduction of iPad technology.
- Endorsed the introduction of the Positive Behaviour Support program.

On behalf of the Board, I would like to acknowledge the commitment and enthusiasm of our school Principal Mr Gary Quinn for his dedication to ensuring the staff, students and wider school community work as a team to deliver relevant, vibrant programs at Dalyellup Primary School.

Susan Carter  
Dalyellup Primary School  
School Board  
Chairperson

## **Understanding the Annual Report**

The Annual report provides parents, caregivers and members of the community an overview of Dalyellup Primary School’s performance over the past year. It provides information about student attendance, academic performance, school programs and staff development. This report is a small component of the total reporting the school does, and should be read in conjunction with student reports, newsletters, school council minutes, P&C minutes and other documents.

## **Dalyellup Primary School**

2013 was an exciting year for Dalyellup Primary School. Four years after merging with newly built facilities at Wake Drive to become Dalyellup College, Dalyellup Primary School recommenced as a stand-alone primary school catering for children from Kindergarten to Year 6. The decision by the State Government to have Year 7 children working from a High School setting, due to commence across Western Australia for the start of the 2015 school year, was brought forward for Dalyellup Primary School to the beginning of 2013. Also occurring at the start of 2013 was the opening of Tuart Forest Primary School, a new public school located within Dalyellup Beach Estate. Tuart Forest Primary School opened with in excess of 200 students, significantly easing the pressure upon Dalyellup Primary School. It is anticipated that in future years, student numbers at Dalyellup Primary School will steadily decline, whilst numbers at Tuart Forest Primary School steadily rise. This may not be the case however, if significant tracts of land are released by developers within current school boundary areas.

## Student Numbers

Dalyellup Primary School commenced the 2013 school year with 826 children from Kindergarten to Year 6. The breakdown of years at school and gender is included in the below.

	Male	Female	Total
Kindergarten	42	37	79
Pre Primary	50	52	102
Year 1	54	55	109
Year 2	47	60	107
Year 3	58	57	115
Year 4	52	48	100
Year 5	40	42	82
Year 6	63	69	132
Total	406	420	826

## Attendance

In 2013 the main strategy used to improve the attendance of students who fell below 80% was a check in system. This system used a weekly classroom based tracker where daily attendance was recorded. Once a week each student brought their tracker to the office where they engaged in an individual conversation with the Deputy Principal. This conversation discussed the week's tracker, set a goal for the following week and provided motivational incentives. This strategy raised the importance of attending school to these students and their families and improvement occurred.

Sending letters home informing families of which % category their child/ren fell into caused some reaction from families but gave the school the opportunity to discuss the importance of regular attendance with these families. At the end of the year a second letter to the same families provided them with feedback as to whether the attendance had improved, remained the same or declined.

### Primary Attendance Rates

	Attendance Rate	
	School	WA Public Schools
2013	93.0%	92.6%

### Attendance % - Primary Year Levels

	Attendance Rate						
	Y01	Y02	Y03	Y04	Y05	Y06	Y07
2013	94%	92%	93%	94%	93%	94%	
WA Public Schools 2013	93%	93%	93%	93%	93%	93%	

## Demographics

The vast majority of students attending Dalyellup Primary School reside on Dalyellup Beach Estate (83% of total student population). As a Local Intake School, Dalyellup Primary is required to guarantee enrolment to any child who can provide proof of residence within our catchment area. Where space exists, enrolment can be accepted from children who live outside our boundaries. Children whose enrolment has been accepted can also continue to attend our school even if they have moved house and now live outside our catchment area. Our student demographic for 2013 was made up as follows:

Dalyellup Beach Estate	686	83%
Gelorup	68	8%
Stratham	25	3%
Bunbury	15	1.8%
South Bunbury	12	1.5%
Boyanup	9	1%
Capel	5	0.5%
Carey Park	4	>0.5%
Donnybrook	1	>0.5%
Millbridge	1	>0.5%

Students attending Dalyellup Primary School come from 12 different countries.

## Staffing

The 2013 school commenced with the following staff employed at Dalyellup Primary School.

Administration	1	Principal
	3	Deputy Principals
	1	Business Manager
Teaching	37.9	Teachers
Non –Teaching	11.1	Education Assistants (including bus warden)
	3.7	Office Staff
	0.9	Library Officers
	3	Cleaning Staff
	0.5	Gardening Staff

All staff employed at the school were fully qualified and possessed all necessary clearances.

Staff development is essential to ensure that students at Dalyellup Primary School continue to receive the best possible education, and the school is committed to providing high quality professional development to our staff. In 2013 staff were involved in professional learning in the following areas:

- Spelling – Smartwords
- Mathematics
- IT – iPad usage
- Autism intervention
- Managing student behaviour – Positive behaviour Support
- Learning Difficulties – Working Memory
- Asthma

## Business Plan

As an Independent Public school, Dalyellup Primary School is working from a Business Plan that sets the direction for the school for the next 3 years. Our focus for the 2013-2015 periods consists of 4 areas –

Children - Central to school operations

Programs will operate at an individual, group, class, year and school level.

Curriculum – Australian Curriculum implementation

Using technology to support student learning.

Culture – Innovative, committed teaching staff –shared developed leadership across the school.

Develop and implement the Positive Behaviour Support (P.B.S) program.

Community – Develop and implement programs that link students to their community. Bluearth, Active After School, Waterwise, Wastewise, CHAT, P&C involvement, Open Night, etc.

During 2013 the following implementation of our Business Plan occurred.

## Children

As well as experiencing a rigorous curriculum, students at Dalyellup Primary School have access to a wide variety of sporting, cultural and social activities that are designed to challenge them,

extend their knowledge of the world in which they live and expose them to different cultural beliefs and understandings.

#### Sporting –

In-term Swimming Lessons (Pre-primary to Year 6)

Interschool Swimming Carnival

Interschool Cross Country Running Carnival

Faction Athletics Carnival

Faction Swimming Carnival

School Cross Country Running Carnival

State Cross Country Running Carnival

Interschool Athletics Carnival

There were also sporting incursions for cricket, golf and rugby.

An Active After School sports program was also offered to our students over the course of the 2013 school year.

#### Cultural –

Ballet Incursion

Wellington Discovery centre Excursion

Bluearth

Harmony Day

Esteddford

Australia's Biggest Morning Tea

Give A Damn Give A Can

Maths Roadshow

Monster Trucks (Road Safety)

St John's First Aid for Children

Celtic Music Incursion

Book Week

ANZAC Day Service

Remembrance Day

Carols by Candlelight

National Simultaneous Storytime

GWN Weatherwall

SDERA Drug/Road Safety

Cyberbulling Awareness

#### Social –

Student Council Fundraising for Charity

- PCYC Bunbury
- P.M.H (Pyjama Day)
- Red Cross

PBS Pizza with the Principal

After Hours student discos (P&C)

Rubbish Free days

Easter Raffle (P&C)

Election Day Barbeque (P&C)

Year 6 Camp

Year 6 Graduation / Lunch

Weekly Assemblies

Faction Reward Barbeques

Give me 5 for kids (Radiowest)

Anti-Graffiti Campaign (Shire of Capel)

Father's Day Stall (P&C)

Christmas Raffle (P&C)

### **Curriculum**

#### **English -**

The English Learning Area has been one of Dalyellup Primary School's priorities for the past 5 years. In 2013 the plans and processes were put on maintenance following a significant amount of resourcing; in previous years.

The establishment of the English leaders committee consisting of a teacher representative from each of the year levels from Kindergarten to year 6 continues to model, monitor and evaluate the school's English plan. This committee has changed slightly each year depending on the year level the representatives are currently teaching or the introduction of new staff.

English is divided into;

- Receptive language development – reading, listening, viewing
- Expressive language development – writing, speaking and digital production.

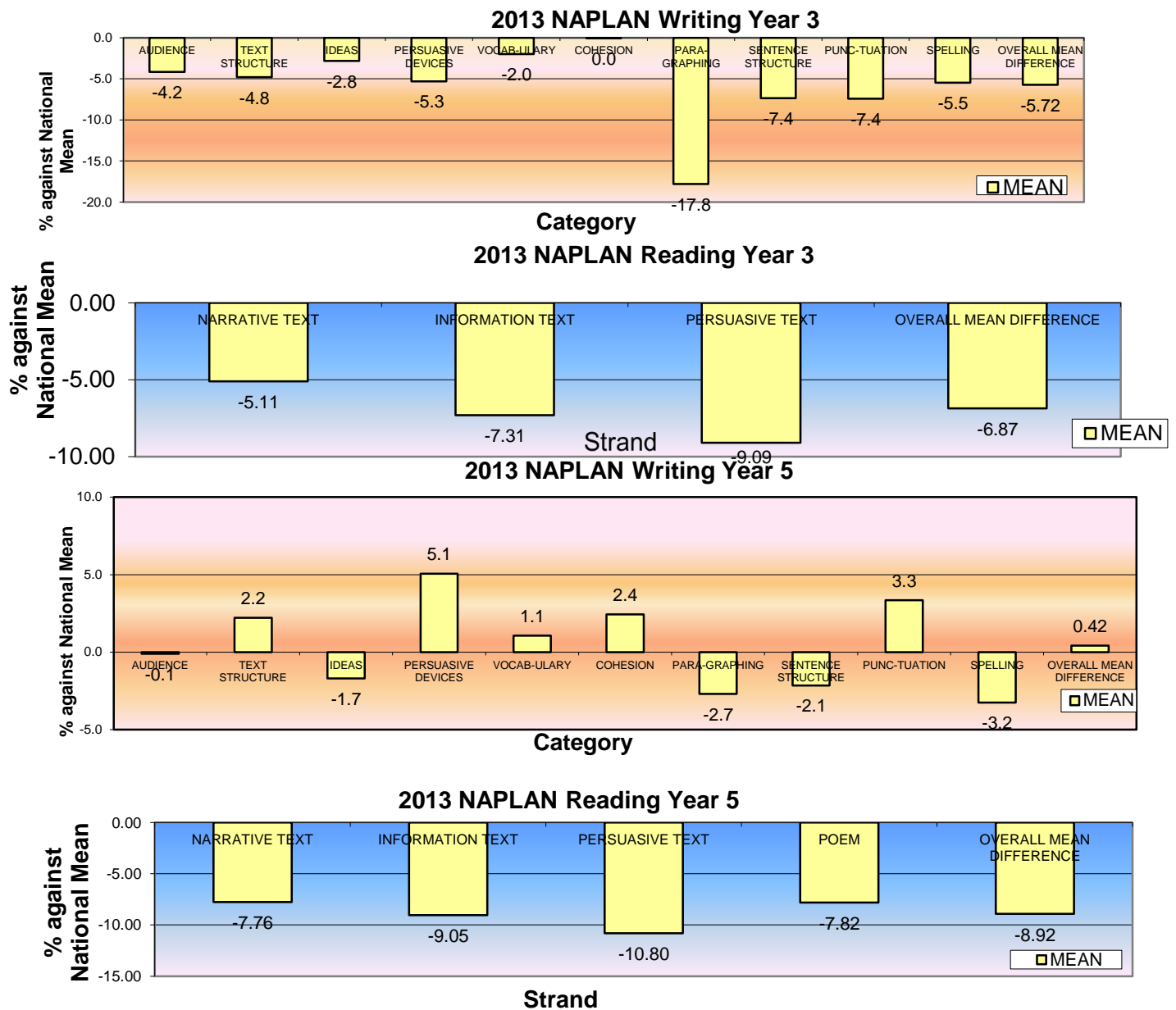
The focus for 2013 was to improve reading comprehension through the development of reading skills. We use a guided reading approach across all years to achieve this goal. The guided reading lessons look different in a Kindergarten setting compared to an upper primary setting due to the cognitive development of the students, however the language of teaching reading is consistent throughout the school.

We have also focused on spelling as part of the writing process. The primary classes are trialling the use of "Smart Words" spelling program. Parents were asked to provide a student work book in 2013 for their children to use and in 2014 the school is funding the program.

Towards the end of 2013 the staff completed a PMI on the program and the consistent message was that more professional development was required to run the program more effectively. At

the beginning of 2014 this PL was delivered. A follow up demonstration day with the presenter has been organised for the middle of term one. At the end of 2014 we will evaluate the program by comparing the progress of the students using standardised test results from the SA spelling assessment and the Schonell spelling assessment along with the NAPLAN results for the year 3 and 5. A decision will be made at the end of 2014 on the way forward with the whole school spelling program.

Our results in the English area from the 2013 NAPLAN testing program were as follows:-

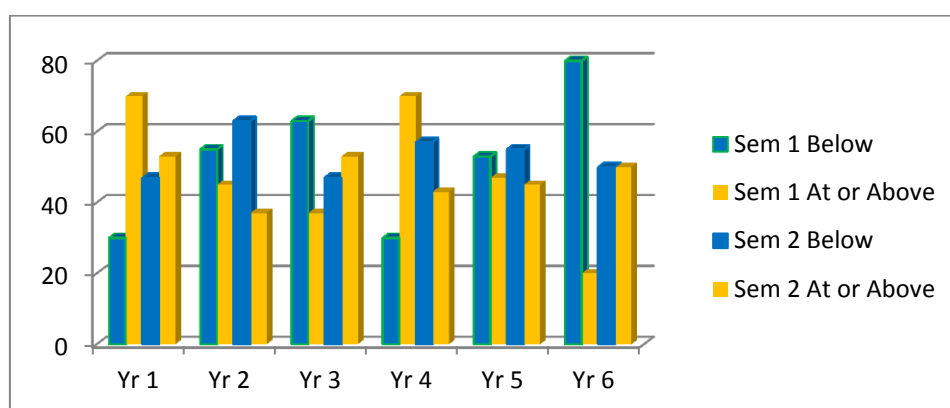


**Recommendations arising from results analysis:**

- NAPLAN results identified a need to improve the students' understanding of paragraphing and spelling in context.
- A continued focus on the development of student skills in writing Persuasive Texts is required
- Teachers to introduce the metalanguage of paragraph in Kindy during modelled reading lessons; and identify paragraphs in PP-6 when reading.
- English Enrichment classes to extend high achieving students in writing to continue for Students in Years 3 to 6
- SAER classes for identified students Years 1 to 6 to be re-introduced.

## SOUTH AUSTRALIAN SPELLING TEST

### PERCENTAGE OF STUDENTS BELOW, AND AT OR ABOVE EXPECTED SPELLING AGE BY YEAR LEVEL



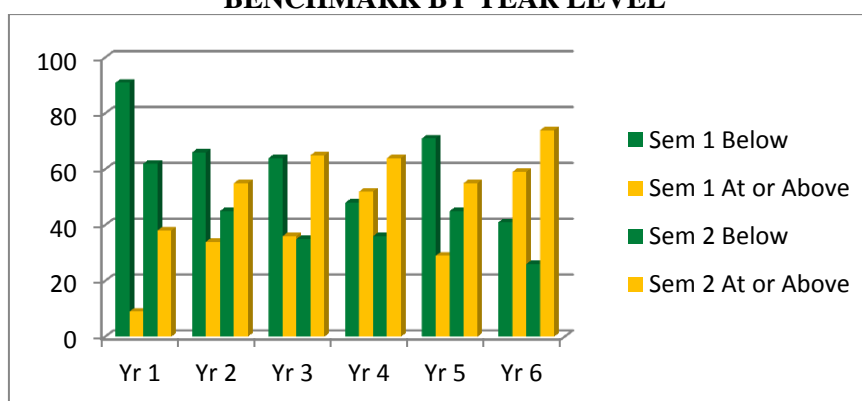
<b>SEMESTER 1</b>						<b>SEMESTER 2</b>					
<i>Percentage of Students <u>below</u> minimum expected spelling age:</i>						<i>Percentage of Students <u>below</u> minimum expected spelling age:</i>					
Yr 1	Yr 2	Yr 3	Yr 4	Yr 5	Yr 6	Yr 1	Yr 2	Yr 3	Yr 4	Yr 5	Yr 6
30%	55%	63	30	53	80	47%	63	47	57	55	50
<i>Percentage of Students <u>at or above</u> minimum expected spelling age:</i>						<i>Percentage of Students <u>at or above</u> minimum expected spelling age:</i>					
Yr 1	Yr 2	Yr 3	Yr 4	Yr 5	Yr 6	Yr 1	Yr 2	Yr 3	Yr 4	Yr 5	Yr 6
70%	45%	37	70	47	20	53%	37	53	43	45	50

#### *Recommendations arising from results analysis of all years:*

- Continuation of the school-wide Smart Words Program in 2014.
- Introduction of the Schonell Spelling Test to be used in conjunction with the South Australian Spelling Test in order to validate results, for Years 1 to 6.
- Review of Smart words spelling program at the end of year by examining baseline data from SA spelling test and Schonell spelling test from beginning of 2014 to end of 2014.

## PM READING BENCHMARK ANALYSIS

### PERCENTAGE OF STUDENTS BELOW, AND AT OR ABOVE EXPECTED READING BENCHMARK BY YEAR LEVEL



<b>SEMESTER 1</b>						<b>SEMESTER 2</b>					
<i>Percentage of Students <u>below</u> minimum expected PM Benchmark Level:</i>						<i>Percentage of Students <u>below</u> minimum expected PM Benchmark Level:</i>					
Yr 1	Yr 2	Yr 3	Yr 4	Yr 5	Yr 6	Yr 1	Yr 2	Yr 3	Yr 4	Yr 5	Yr 6
91	66	64	48	71	41	62	45	35	36	45	26
<i>Percentage of Students <u>at or above</u> minimum PM Benchmark Level:</i>						<i>Percentage of Students <u>at or above</u> minimum expected PM Benchmark Level:</i>					
Yr 1	Yr 2	Yr 3	Yr 4	Yr 5	Yr 6	Yr 1	Yr 2	Yr 3	Yr 4	Yr 5	Yr 6
9	34	36	52	29	59	38	55	65	64	55	74

### ***Recommendations arising from results analysis of all years:***

- *The introduction of Home Readers in PP has improved the PM benchmark levels of students.*
- *Recommend increasing our target expectations in PM benchmarks.*
- *Literacy committee to investigate ways to extend the vocabulary of students.*

### **Mathematics –**

The Mathematics Learning Area has been one of Dalyellup Primary School's priorities for the past 2 years. In 2013 the school commenced the implementation of the Australian Curriculum in Mathematics, focusing on the following key aspects:

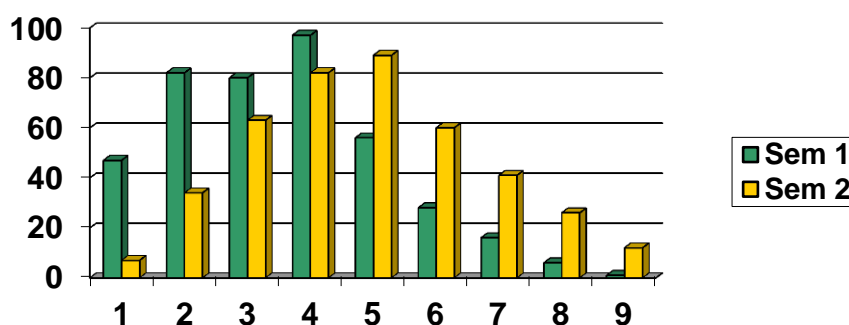
- The development of school specific scope & sequence documents for all year levels in the area of Mental Calculation Strategies for: Counting Skills; Addition & Subtraction; and Multiplication & Division.
- A focus on targeted Professional Learning aimed at the development of staff skills and abilities in relation to Australian Curriculum implementation.
- The establishment of a Mathematics Steering Committee consisting of a teacher representative from each of the year levels from Kindergarten to year 6 continues to model, monitor and evaluate the school's Mathematics plan.
- The establishment of data collection and analysis processes to enable the school to track student progress throughout the year and from year to year. Data collection methods include the following: On Entry Assessment; Numeracy Net, NAPLAN and EasyMark Maths.

Student concept and skill development was supported by the following initiatives:

- The development of Year Level recommendations for Improvement Focus Areas in Mathematics, based on results from analysed test data and staff feedback.
- The use of Mathletics as a program to support students with their mathematical understandings using digital technologies.
- The purchase of a significant number of Educational Maths Games, linked to the Scope & Sequence Documents developed from the Australian Curriculum, for students to use in conjunction with other resources to support their learning.

## **EASYMARK MATHEMATICS RESULTS**

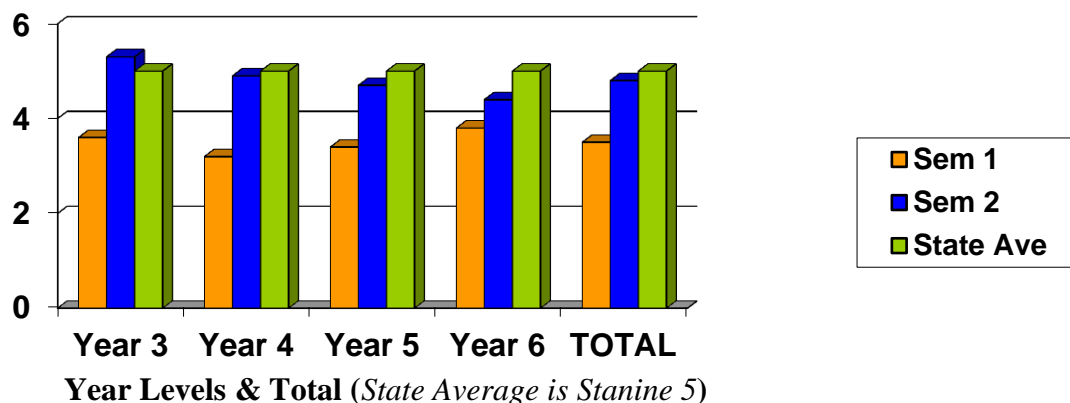
### **DISTRIBUTION OF STANINES BY STUDENT TOTAL – Semester 1 to Semester 2, 2013**



**Stanine** (*State average is Stanine 5*)

Stanine	Explanation		
1	lowest 4% achievement level	Poor	Lowest 25% of population
2	next 7%	Well Below Average	
3	next 12%	Below Average	
4	next 17%	Low Average	Middle 50% of population
5	middle 20% = average achievement	Average	
6	next 17%	High Average	
7	next 12%	Above Average	Highest 25% of population
8	next 7%	Well Above Average	
9	top 4% achievement level	Outstanding	

## AVERAGE STANINE IN EACH YEAR LEVEL – Semester 1 to Semester 2, 2013



Semester Average	Year & Total				
	Yr 3	Yr 4	Yr 5	Yr 6	TOTAL
Semester 1 Average	3.6	3.2	3.4	3.8	3.5
Semester 2 Average	5.3	4.9	4.7	4.4	4.8
<b>STATE AVERAGE</b>					<b>5.0</b>

### **Recommendations arising from results analysis of all years:**

- Continuation of Australian Curriculum Implementation and development of Scope & Sequence documents to support concept development
- Teacher use of analysed EasyMark data to determine trends and focus areas for student improvement and extension.
- EasyMark data to be used in conjunction with NAPLAN Data to validate trends and determine a basis for conceptual development planning.
- EasyMark Testing to continue in 2014, with a switch to testing according to Australian Curriculum Standards.

### **Cultural**

#### **Positive Behaviour Support (PBS)**

After gaining more than 80% buy in from the staff at the end of 2012, a PBS team that was representative of the staff and also include parent representation was formed. The team members attended 3 days of training during 2013 and after deciding on roles and responsibilities meet every second week after hours. They used time on School Development Days and after school professional learning days to collaboratively lead the staff and students through a process to establish four behaviour expectations:

Be Responsible,  
Be Respectful,  
Be Safe, and  
Be Your Personal Best.

Using these expectations as the basis, major settings in the school and how the expectations would look in each setting was determined and used to produce a matrix.

A poster competition was run that resulted in over 300 entries. The finalists receiving significant prizes and their designs will be considered by a graphic designer when a poster displaying the four expectations will be developed. In 2014 the team will continue to lead the school through more components of the PBS framework.

### **School Finances –**

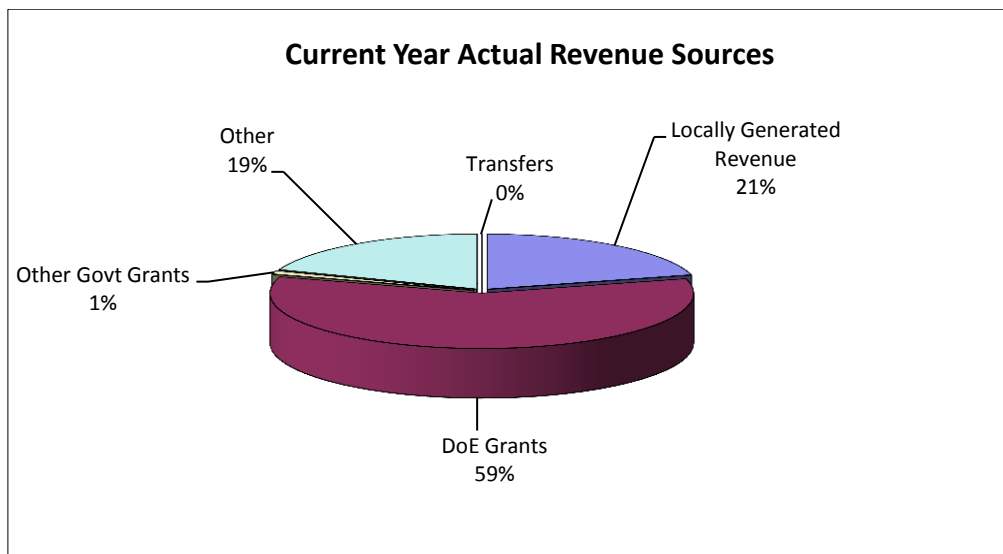
School income is derived from a number of sources (government grants, voluntary contributions, P&C Association, donations, etc.) and is expended in 181 different cost centres across the school. Rigorous financial management practices are in place at Dalyellup Primary School with regular reporting of the school's financial position being delivered to the P&C, staff and school board.

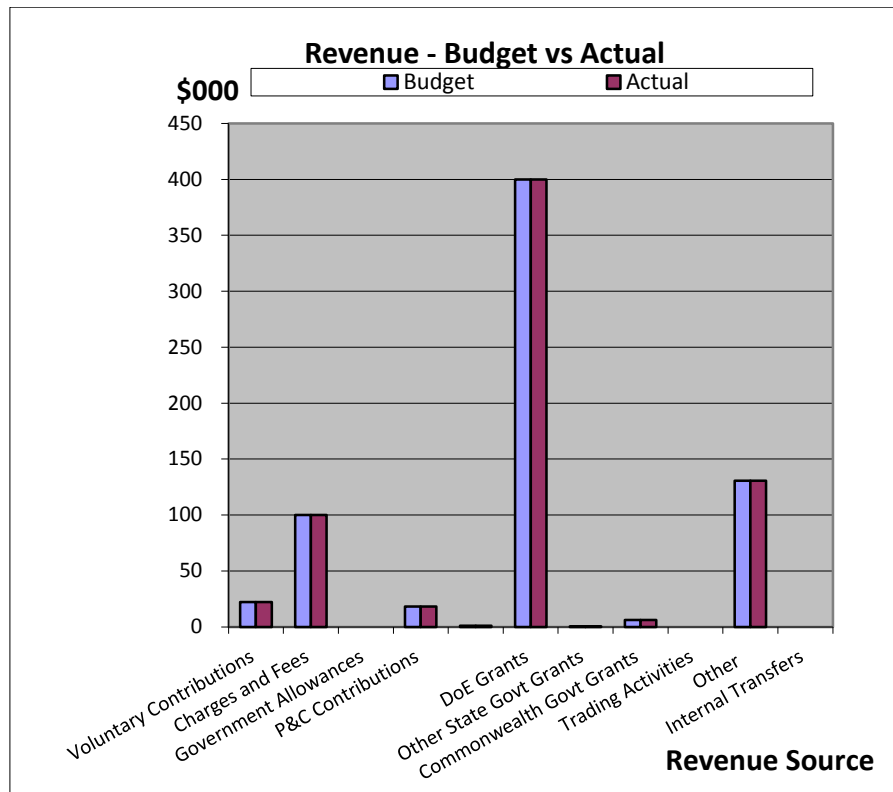
Please refer to the graphs and information on the following pages.



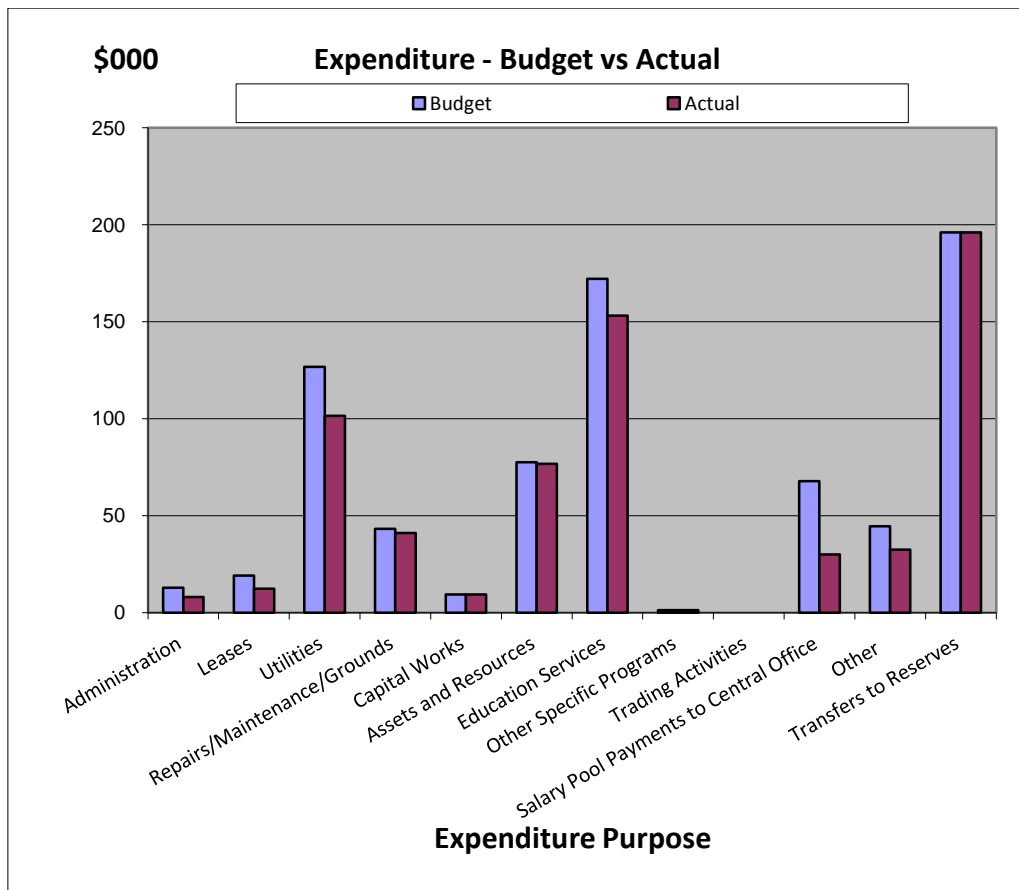
## Dalyellup Primary School Financial Summary as at 31 December 2013

	Revenue - Cash	Budget	Actual
1	Voluntary Contributions	\$ 22,174.00	\$ 22,174.10
2	Charges and Fees	\$ 99,981.00	\$ 99,980.43
3	Government Allowances	\$ -	\$ -
4	P&C Contributions	\$ 18,100.00	\$ 18,100.00
5	Fundraising/Donations/Sponsorships	\$ 973.00	\$ 972.90
6	DoE Grants	\$ 399,827.33	\$ 399,828.11
7	Other State Govt Grants	\$ 509.00	\$ 509.00
8	Commonwealth Govt Grants	\$ 6,115.00	\$ 6,114.60
9	Trading Activities	\$ -	\$ -
10	Other	\$ 130,727.00	\$ 130,727.70
11	Internal Transfers	\$ -	\$ -
	<b>Total</b>	<b>\$ 678,406.33</b>	<b>\$ 678,406.84</b>
	<b>Opening Balance</b>	<b>\$ 108,085.12</b>	<b>\$ 108,085.12</b>
	<b>Total Funds Available</b>	<b>\$ 786,491.45</b>	<b>\$ 786,491.96</b>

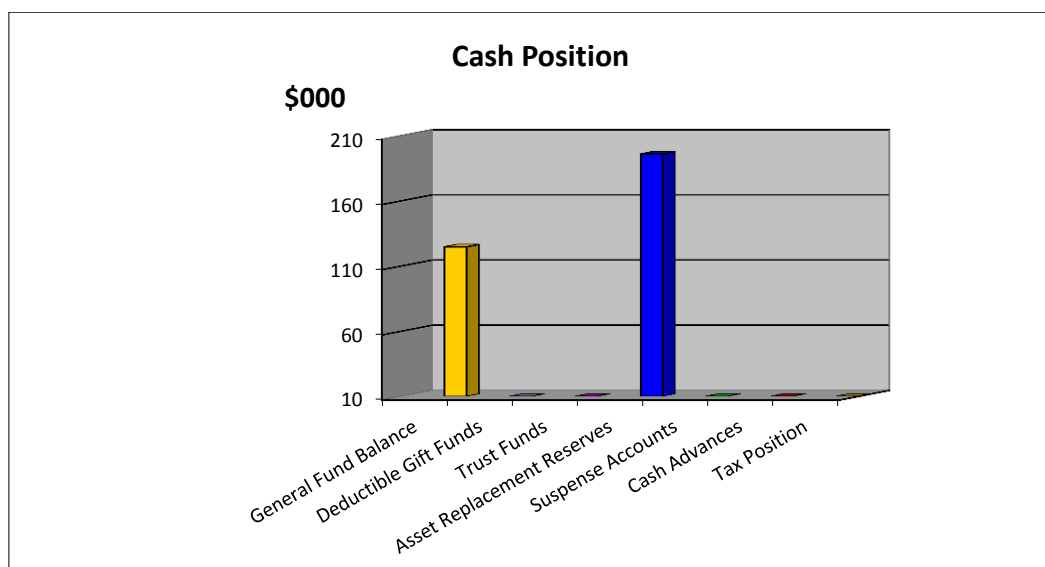




	Expenditure	Budget	Actual
1	Administration	\$ 12,834.00	\$ 8,012.64
2	Leases	\$ 19,044.00	\$ 12,303.22
3	Utilities	\$ 126,755.46	\$ 101,471.06
4	Repairs/Maintenance/Grounds	\$ 43,133.00	\$ 41,087.33
5	Capital Works	\$ 9,364.00	\$ 9,271.81
6	Assets and Resources	\$ 77,508.00	\$ 76,673.81
7	Education Services	\$ 172,058.12	\$ 153,221.96
8	Other Specific Programs	\$ 1,303.09	\$ 1,231.82
9	Trading Activities	\$ -	\$ -
10	Salary Pool Payments to Central Office	\$ 67,851.29	\$ 30,000.00
11	Other	\$ 44,475.50	\$ 32,506.28
12	Transfers to Reserves	\$ 196,000.00	\$ 196,000.00
	<b>Total</b>	\$ 770,326.46	\$ 661,779.93



	<b>Cash Position as at:</b>		
	<b>Bank Balance</b>	<b>\$</b>	<b>317,626.33</b>
	Made up of:	\$	-
1	General Fund Balance	\$	124,712.03
2	Deductible Gift Fund	\$	-
3	Trust Fund	\$	-
4	Asset Replacement Reserves	\$	196,000.00
5	Suspense Accounts	-\$	580.70
6	Cash Advances	\$	-
7	Tax Position	-\$	2,505.00
	<b>Total Bank Balance</b>	<b>\$</b>	<b>317,626.33</b>



# Mission Statement

Dalyellup Primary School,

In partnership with the community, will provide an environment that is:

- Inclusive and nurturing
- Educative and challenging
- Encouraging and affirming

To develop lifelong learners able to participate successfully in our  
changing world.



Please contact the school on 9795 2999 should you wish to discuss an aspect of the  
Annual Report in greater depth.